

SAFETYJACK<sup>1</sup>

**INSTRUCTIONS FOR USE**

---

<sup>1</sup> These instructions relate primarily to SafetyJack version 2 and notes are included for version 1. That said, SafetyJack, version 1 and version 2, both meet current security standards applicable to shoring and guardrails when used in accordance with these instructions.

## Table of Contents

### INFORMATION

INFORMATION FOR USERS .....	3
PRODUCT DESCRIPTION .....	4
INSTALLATION .....	5
Single Installation: .....	5
Dual installation (head plate and foot plate):.....	5
Permanent installation of SafetyJack.....	5
Removing the SafetyJack .....	5
USAGE .....	6
Use in shoring.....	6
Use in Guardrails .....	6
DISASSEMBLY.....	7
WARNINGS .....	7
TECHNICAL DATA SHEET .....	8
Device.....	8
Security.....	8
STORAGE .....	9
ADDITIONAL INFORMATION.....	9
CUSTOMER SERVICE .....	9

## INFORMATION FOR USERS

The SafetyJack is a security device that dramatically reduces the risk of falling support posts. The device has been rigorously tested in an independent laboratory on both steel and aluminum posts at a height of ten (10) feet. These tests were carried out in a variety of simulations and under different climatic conditions taking into account significant temperature variances.

All users of SafetyJack products must have read the contents of this document and apply the related safety measures. In all circumstances, the user must comply with the laws, standards and regulations in force in the country or jurisdiction concerned.

The condition of the SafetyJack device must be examined carefully before each use. SafetyJack devices with parts that appear to be damaged, cracked or show signs of significant wear should be removed and permanently discarded to prevent any further use.

No modification of the SafetyJack device is permitted; any change will create a safety risk.

The instructions for use set out in this document are based on laboratory tests and analysis of the results. The tests certify that the proper use of the SafetyJack device can substitute for a wood block. It is the user's responsibility to follow these instructions rigorously.

In addition, it is also the responsibility of the user to ensure that each support post on which a SafetyJack device is installed is safe and in good working condition, and that its use complies with the manufacturer's instructions.

## PRODUCT DESCRIPTION

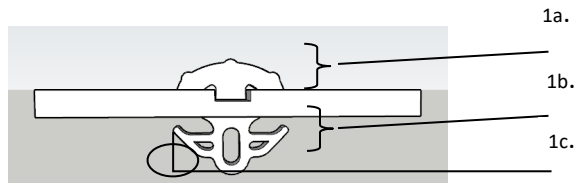
The SafetyJack consists of two main parts, assembled at the factory.

### 1. Anchor

1a. Head

1b. Body

1c. Security fins



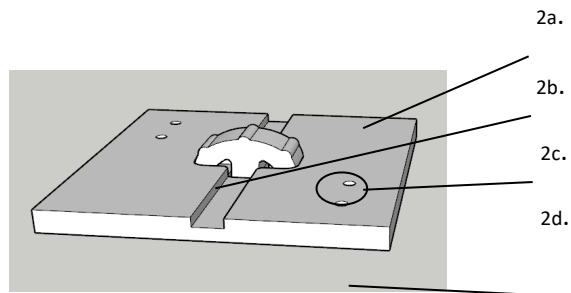
### 2. Support Plate

a. Contact surface

b. Gutter

c. Passage hole

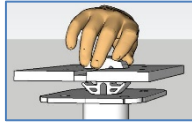
d. Alignment pad



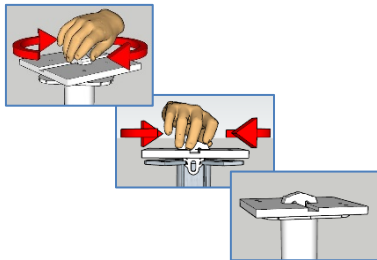
## INSTALLATION

### Single Installation:

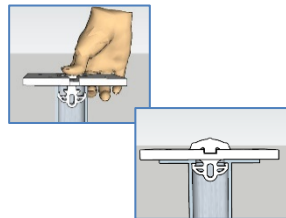
Single installation is possible on either the foot or head plate of a support post. Laboratory tests favour head plate installation for maximum safety.



1. Press the anchor body onto the post head plate. The anchor and the support plate must be on the same axis.



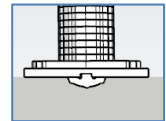
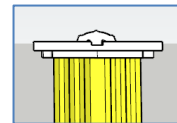
2. Set the anchor by rotating 180° until it is seated squarely on top of the post head plate. Make sure that the edges of the support plate are properly aligned with the post head plate. If not, make the necessary adjustment.



3. Using your thumb or palm, press the anchor head down to engage the security fins.

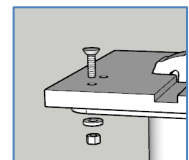
### Dual installation (head plate and foot plate):

When installing the second SafetyJack, make sure that the anchor heads are parallel to each other (gutters face the same direction). Follow steps 1 through 3 above. If required, make the necessary adjustment so that the two SafetyJacks are each properly aligned with the head and foot support post plates.



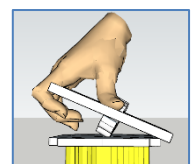
### Permanent installation of SafetyJack

Once the SafetyJack is in place, use 1/4" bolts at least 1.5" (~35 mm) long to attach the SafetyJack support plate to the support post through the pre-drilled holes.



### Removing the SafetyJack

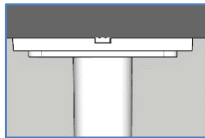
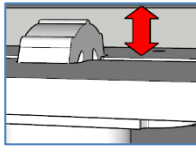
1. If the SafetyJack has been permanently installed with bolts onto the support post, remove the screws from the passage holes.
2. Grasp the SafetyJack support plate and lift upwards with moderate force towards the user to release the anchor security



## USAGE

---

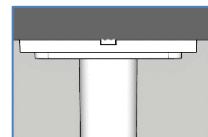
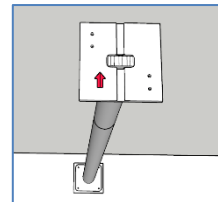
### Use in shoring



1. With the SafetyJack installed, raise the support post vertically and adjust the post height to leave a small gap between the SafetyJack anchor head and the bearing surface.
2. Raise the height of the support post so that the entire SafetyJack support plate makes full contact and is flush with the bearing surface.
3. Tighten the tension to a minimum of 200 lbs (900 N ). This minimum can be reached by tightening manually.

### Use in Guardrails

1. Perform a dual installation according to the instructions set out above.
2. Position the support post so that the SafetyJack gutters are perpendicular to the axis of the guardrail. Adjust the length of the support post to leave a small gap between the post head and the bearing surface when in the installing position.
3. Tighten the support post, ensuring that the entire SafetyJack support plate makes full contact and is flush with the bearing surface.
4. Increase the tension to 700 lbs (3.1 KN). This minimum can be achieved by manually adjusting the support post and then applying a moderate hammer blow to the adjustment nut<sup>2</sup>.



### Note 1

---

<sup>2</sup> For the SafetyJack, version 1, this power-up requires 1000 lb tension and requires additional effort. In this regard, please consult the Compression Charts distributed with these instructions.

*Installation is correct if the gutters on the edge profile of the SafetyJack support plate are visible from above and there is a gap of 1 millimeter or less between the support post and the bearing surface.*

**Note 2**

*For both shoring and guardrail use, tension beyond the recommended minimums will not improve the performance of the SafetyJack.*

**DISASSEMBLY**

---

Follow the instructions of the support post manufacturer.

**Note**

When using the SafetyJack on the head plate of a support post for the first time:

1. Loosen the adjustment nut on the support post with a hammer.
2. Before removing the support post, shake the top of the post slightly to disengage the SafetyJack support plate from the bearing surface.
3. Disassemble the support post according to the manufacturer's instructions.

**WARNINGS**

---

For safe use:

- Bearing surface must be ice-free.
- SafetyJack gutters must remain free of obstructions to ensure adequate drainage.
- The support post with the SafetyJack installed must be and remain in full contact and flush with the bearing surface and/or slab.
- Regularly examine the tension on the support posts with SafetyJack installed regularly. A gap of more than 2 millimeters between the SafetyJack support plate and the bearing surface will no longer provide structural support for the support post. Be sure to tighten the support post regularly to restore the tension prescribed for the use.

TROUBLESHOOTING GUIDE –		
POOR CONTACT		
IMAGE	LIKELY CAUSE	SOLUTION
	Significant decrease in temperature	Tighten the supporting post to restore the tension required for the use in question.
	Inclination in support post positioning	Reposition support post to plumb (flush) use
	Marked roughness on the bearing surface	Smoothen the contact-bearing surface or relocate the support post
	Protrusion of the anchor due to improper placement of the support post	Reposition the anchor head, then reposition the support post, leaving a small gap between the anchor head and the bearing surface before tightening the support post.

## TECHNICAL DATA SHEET

### Device

#### Anchor

Material: High performance elastomer

Dimensions :  $\approx 2 \frac{3}{8}$  in (60 mm) X  $\approx 2 \frac{3}{8}$  in (62 mm) X  $\frac{7}{8}$  in (22 mm)

Permissible range of temperature variation: +50 °C to -50 °C

Head height: 16 mm from top of support post plate surface

#### Support Plate

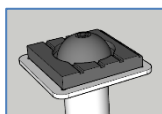
Material: Polymer (recycled) and wood fibre

Dimensions :  $\approx 6 \frac{3}{4}$  in (172 mm) X  $\approx 6 \frac{3}{4}$  in (172 mm) X  $\frac{1}{2}$  in (12 mm)

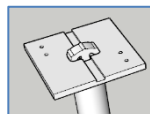
Allowable pressure:  $\approx 4435$  PSI

### Security

The support posts will remain in place up to a gap of 8 mm<sup>3</sup> (factor 2) when used correctly. This value applies to the SafetyJack, versions 1 and 2.



SafetyJack Version 1



SafetyJack Version 2

<sup>3</sup> Due to the weight of the support post, the security factor decreases when the SafetyJack is installed on the foot plate.



## STORAGE

---

For optimal life of the SafetyJack device, reduce exposure to sunlight.

## ADDITIONAL INFORMATION

---

- Warranty 1 year for product failure
- In Quebec, the law requires a wood plate at both ends. However, SafetyJack installed at the upper end only, performs better than CNESST-recommended wood plate. For all other provinces and countries, please refer to the laws and regulations applicable in the jurisdiction where SafetyJack will be used.
- During the first use, a loss of 20% of the amplitude of the head is to be expected. This does not create added risk of use.
- Tests on SafetyJack were carried out in an independent laboratory.
  - For more information on test data, please contact our Customer Service.

## CUSTOMER SERVICE

---

[info@malleasolutionsinc.com](mailto:info@malleasolutionsinc.com)